

幻想風穴 ~Loop Place

ZUN

Arr. 紅い流星

♩=130

暗闇の風穴、封じられた妖怪

Intro.

Em D/F# Em/G E/G#

5 Am7 F#/A# Bsus4 B

A 9 FM7 G Am7 D7

13 CM7 D Esus4 E

17 FM7 G Am7 D7

21 CM7 D Esus4 E

B 25 AM7 G#m7 E/F#

29 C# AM7 G#7(b9) E/F# F7

C 33 D E F#m A B G# C#m

37 D E F#m A B C D

地獄の深道

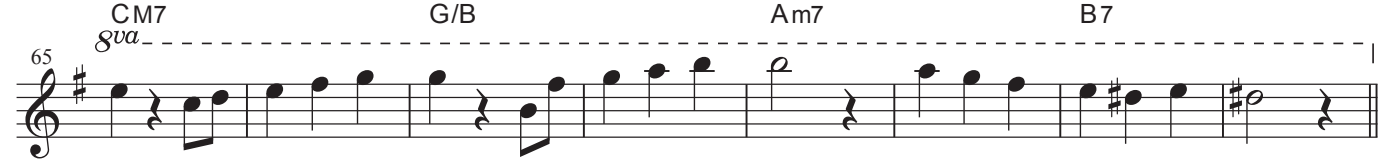
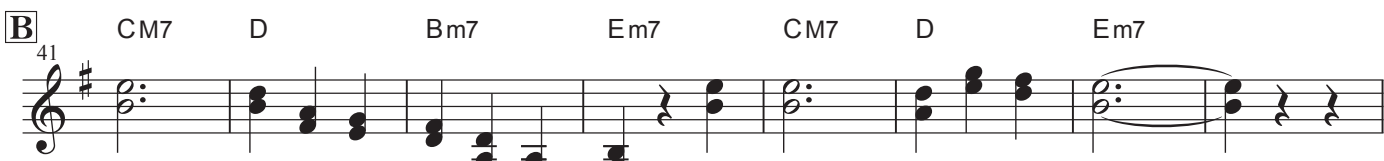
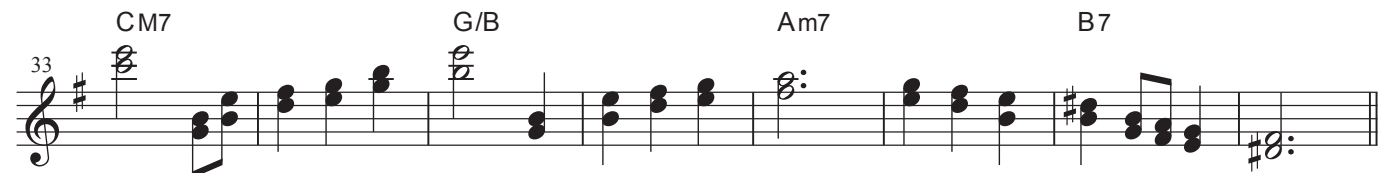
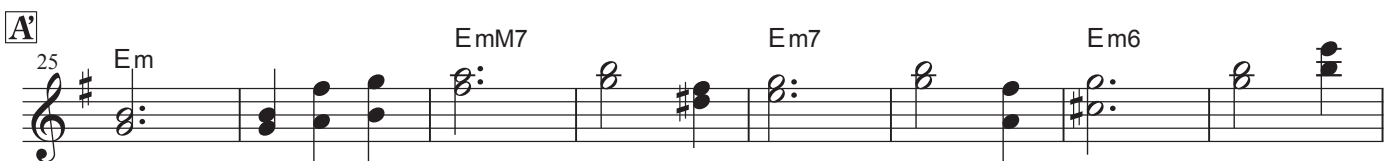
緑眼のジェラシー、渡る者の途絶えた橋

ZUN

Arr. 紅い流星

♩=161

Intro.



旧地獄街道 ~僕が罪袋になった理由~

ZUN

♩=155

旧地獄街道に行く、華のさかづき大江山

Arr. 紅い流星

Intro.

Introductory piano accompaniment in E-flat major, 4/4 time. The right hand features a series of chords (E-flat major, D minor, G minor) and a melodic line. The left hand provides a rhythmic accompaniment with eighth notes.

A

Section A, measures 5-8. Chords: Eb, Dm, Gm, Eb, Dm, Gm. The right hand has a melodic line with eighth notes. The left hand has a rhythmic accompaniment with eighth notes.

Section A, measures 9-12. Chords: Eb, Dm, Gm, Eb, Dm, Gm. The right hand has a melodic line with eighth notes. The left hand has a rhythmic accompaniment with eighth notes.

B

Section B, measures 13-16. Chords: Eb, F, Gm, Bb, C, Dm. The right hand has a melodic line with eighth notes. The left hand has a rhythmic accompaniment with eighth notes.

Section B, measures 17-20. Chords: Eb, F, Gm, Bb, C, Dsus4. The right hand has a melodic line with eighth notes. The left hand has a rhythmic accompaniment with eighth notes.

少女さとり

ZUN

Arr. 紅い流星

A

Musical notation for section A, measures 1-16. The key signature is two flats (B-flat and E-flat), and the time signature is common time (C). The notation is on a single treble clef staff. Chord symbols are placed above the staff: Cm (1-2), Fm/C (3), Cm (4), D7 (5), Fm7 (6), G7 (7), Cm (8), Fm/C (9), Cm (10), D7 (11), Fm7 (12), G7 (13), Cm (14), Fm/C (15), Cm (16). Measure 16 ends with a double bar line and repeat dots.

B

Musical notation for section B, measures 17-40. The key signature is two flats (B-flat and E-flat), and the time signature is common time (C). The notation is on a single treble clef staff. Chord symbols are placed above the staff: Cm (17), D7 (18), Fm7 (19), Cm (20), Fm7 (21), G7 (22), AbM7 (23), G7 (24), Cm (25), D7 (26), Fm7 (27), Cm (28), Fm7 (29), G7 (30), AbM7 (31), G7 (32), AbM7 (33), Cm7 (34), AbM7 (37), Cm7 (38). Measures 33-36 and 37-40 consist of eighth-note patterns on a single pitch.

灼熱地獄跡

ZUN

♩=145

廃獄ララバイ、死体旅行 ~ Be of good cheer!

Arr. 紅い流星

Inter.

Gm Gm+ Gm6 Gm+ Gm Gm+ Gm6 Gm+



靈知の太陽信仰

ZUN

業火マントル、靈知の太陽信仰 ~ Nuclear Fusion

Arr. 紅い流星

♩=176

Intro.

Cm E Eb D Bdim Cm E Eb D Bdim

Pf

Horn

5 Cm E Eb D Bdim Cm E Eb D Bdim

A

9 Cm Bb Cm Bb Cm Ab Bb

13 Cm Bb Cm Bb Cm Ab 1.Bb 2.Bb

B

18 Cm Bb Ab Bb Cm Bb Ab G/B

22 Cm D Em D Db Eb C/E

靈知の太陽信仰

C 27 Fm7 Cm/Eb Bb/D DbM7 C7

31 Fm7 Cm/Eb Bb/D DbM7 C7

35 Fm

D 39 DbM7 Eb Fm7 Eb

43 DbM7 Eb Fm7

47 DbM7 Cm7 Bbm7 Eb/Ab

51 GbM7 CbM7 Gsus4 G7

ラストリモート

ZUN

Arr. 紅い流星

♩=120

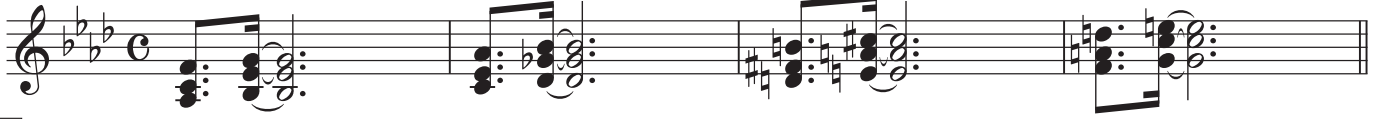
Intro.

Fm Eb/F

Abm Gb/Ab

Bm A/B

Dm C/D



A

Fm C/E

Eb

Bb/D

Db

Eb

Fm



9 Fm C/E Eb Bb/D Db Eb Fm

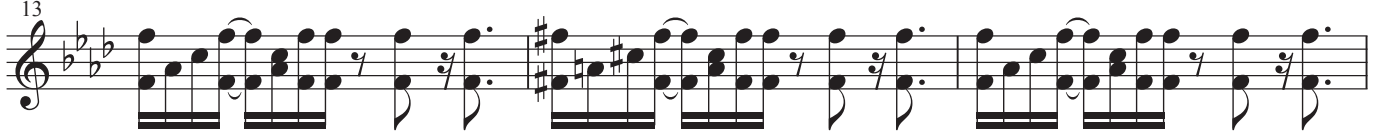


B

Fm

F#m

Fm



F#m

D7(#9)

Ab7



C

Cm7

F7

Dm7

Gm7

Ebm7

F

Gm7



Cm7

F7

Dm7

Gm7

Ebm7

F

Gsus4 G



Cm7

F7

Dm7

Gm7

Ebm7

F

Gm7



Cm7

F7

Dm7

Gm7

Ebm7

F

Gsus4 G



D.C.

ハルトマンの妖怪少女

ZUN

Arr. 紅い流星

♩=160

A Em F Em D# Em F Em D#

5 C BM7 C BM7

B Em F Em D# Em F Em D#

13 C BM7 C BM7

C Em Fdim Em Fdim F#m Gdim F#m Gdim

21 Em Fdim Em Fdim F#m Gdim G#m Adim

D Gbm7 Ab Bbm7 Bb7 Ebm7 Ab7 Dbm7 G7

29 Gbm7 Ab Bbm7 Bb7 Ebm7 Db/F Gbm7 Ab Bbm7

33 Gbm7 Ab Bbm7 Bb7 Ebm7 Ab7 Dbm7 A7

37 Gbm7 Ab Bbm7 Bb7 Ebm7 Db/F Gbm7 Ab Bbm7

D.C.