

Score

紅月ノ摩天楼

感情の摩天楼 ~Cosmic Mind

ZUN

Arr. 紅い流星

Intro.

E \flat M7 F Gm B \flat C

5 Cm7 Dm7 Gm A \flat 7

10 E \flat M7 F Gm B \flat C

14 Cm7 Dm7 E \flat M7 Dm7 Gm7

A 18 E \flat M7 D7 E \flat M7 D7

22 E \flat M7 D7 E \flat M7 F Gm7

B 26 Cm7 F7 B \flat M7 Gm7

30 E \flat M7 D7 Gm7 G7

34 Cm7 F7 B \flat M7 Gm7

38 Am7(b5) D7

紅月ノ摩天楼



42 EbM7 F Gm Bb C

46 Cm7 Dm7 EbM7 F Gm

50 EbM7 F Gm Bb C

54 Cm7 Dm7 Gm F/A

To Coda

57 Bb C EbM7 D7 Gm7



60 Ab7

春湊舟影

ZUN

春の湊に

Arr. 紅い流星

Intro.

Chords: D^bM7 Eb Cm7 Fm7

5 B^bm7 A^b/C D^bM7 Eb Fm7

A

9 Dm7 B^bM7

13 Gm7 Am7 B^bM7 A7 Dm7

17 Dm7 B^bM7

21 Gm7 Am7 B^bM7 A7 Dm7

B

25 B^bM7 C Dm7

29 D^bM7 Eb Fm7 B^bm7 C7 Eb C7

C

34 D^bM7 Eb Fm7 B^b7 B^bm7 Eb A^bM7 D7 A^b7

38 D^bM7 Eb Fm7 B^b7 Gm7(b5) C7 Fm7

D.C.

生置傘魂

ZUN

閉ざせし雲の通り路、万年置き傘にご注意を

Arr. 紅い流星

Intro.

Musical notation for the Intro section, measures 1-4. The key signature is two flats (B-flat and E-flat), and the time signature is common time (C). The melody consists of eighth and sixteenth notes.

Musical notation for the Intro section, measures 5-8. The melody continues with eighth and sixteenth notes.

A
9 Cm7 Gm7 Fm7 Gm7

Musical notation for section A, measures 9-12. The melody is primarily quarter notes with some eighth notes. Chords are Cm7, Gm7, Fm7, and Gm7.

13 Cm7 Gm7 Gbm7 Fm7 Gm7

Musical notation for section A, measures 13-16. The melody continues with quarter notes. Chords are Cm7, Gm7, Gbm7 Fm7, and Gm7.

B
17

Musical notation for section B, measures 17-20. The melody features eighth notes and a triplet of eighth notes in measure 20. Chords are Gm7, Gm7, Gm7, and Gm7.

21 Ab7

Musical notation for section B, measures 21-24. The melody continues with eighth notes. Chords are Gm7, Gm7, Gm7, and Ab7.

C
25 Gm7 Dm7 Cm7 D7

Musical notation for section C, measures 25-28. The melody consists of quarter notes. Chords are Gm7, Dm7, Cm7, and D7.

29 Gm7 Dm7 Cm7 D7

Musical notation for section C, measures 29-32. The melody continues with quarter notes. Chords are Gm7, Dm7, Cm7, and D7.

33 Gm7 Dm7 Cm7 D7

Musical notation for section C, measures 33-36. The melody consists of quarter notes. Chords are Gm7, Dm7, Cm7, and D7.

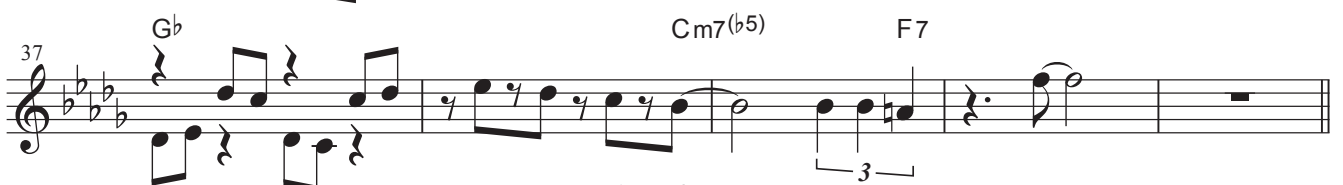
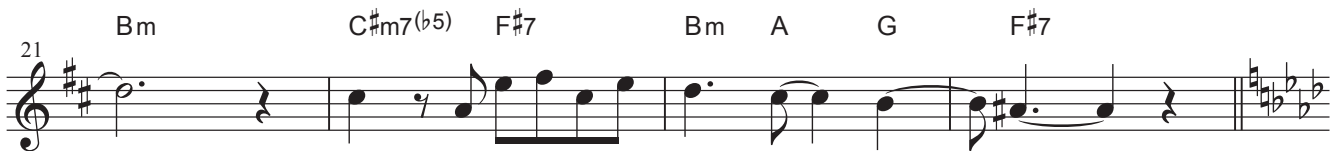
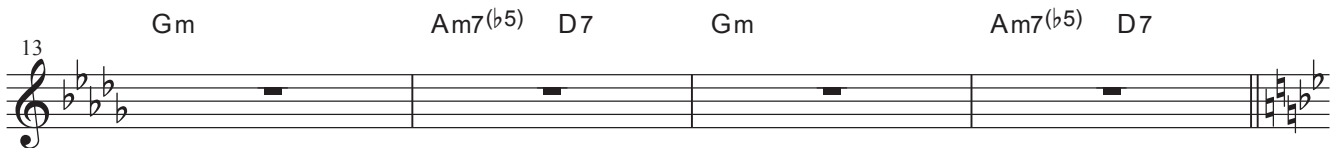
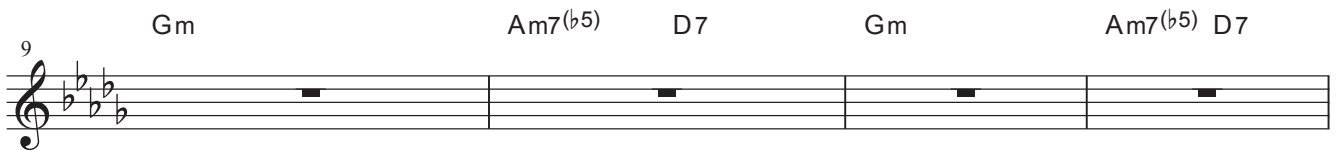
カスカラ少女

時代親父とハイカラ少女

ZUN

Arr. 紅い流星

Intro.



地獄ノ牛鬼

~幽霊客船の時空を超えた旅~

曲 ZUN
編曲 紅い流星

Intro.

Fm7



Fm7



A

Fm7 Ab/Eb Bb/D DbM7 Bbm7 C7 DbM7 C7



Fm7 Ab/Eb Bb/D DbM7 Bbm7 Cm7 DbM7 C7



Fm7 Ab/Eb Bb/D DbM7 Bbm7 C7 DbM7 C7



Fm7 Ab/Eb Bb/D DbM7 Bbm7 Cm7 DbM7



B

DbM7 Cm7 Fm7 Bb7



Bbm7 C7 Fm7 Gbm7



DbM7 Cm7 Fm7 Bb7



Dm7(b5) DbM7 Gbm7 B7 Fm7



D.C.

Score

Mura-Sa Please

キャプテンムラサ

ZUN

Arr. 紅い流星

A

Musical notation for the first staff of section A, starting with a **Dm** chord.

Musical notation for the second staff of section A, starting with a **G7** chord and ending with a **Dm** chord.

Musical notation for the third staff of section A, starting with a **G7** chord, containing a triplet of eighth notes, and ending with a **Dm** chord.

B

Musical notation for the fourth staff of section B, starting with a **G7** chord, containing a triplet of eighth notes, and ending with an **A7** chord.

Musical notation for the fifth staff of section B, starting with a **Dm** chord.

殺戮ノ毘沙門天

ZUN

虎柄の毘沙門天

Arr 紅い流星

A Gm Ab Gm Fm Gm Ab Gm Fm

5 Eb Ab Eb Dm Eb Ab Eb Dm

B Gm Eb

9 Gm Eb

Cm D

13 Cm D

C Gm Abm Am Abm Gm

17 Gm Abm Am Abm Gm

Abm Am Abm

21 Abm Am Abm

平成時代劇 ~平安のエイリアン~

曲 ZUN
編曲 紅い流星

Intro.

Dsus4 EbM7(#11) Em11 EbM7(#11) Dsus4 EbM7(#11) Em11 EbM7(#11)

Dsus4 EbM7(#11) Em11 EbM7(#11) Dsus4 EbM7(#11) Em11 EbM7(#11)

A Dm E A7 /C# Dm B7 E7 A7

Dm E A7 /C# Dm B7 E7 A7

Dm E A7 /C# Dm B7 E A7

Dm E A7 /C# Dm B7 E A7

Dm E A7 /C# Dm F7 E7 Eb7

B Dsus4 EbM7(#11) Em11 EbM7(#11) Dsus4 EbM7(#11) Em11 EbM7(#11)

Dsus4 EbM7(#11) Em11 EbM7(#11) Dsus4 EbM7(#11) Em11 EbM7(#11)

A' Dm

Dm

Dm

Dm

Dm F7 E7 Eb7

C B \flat M7 Am7 Dm7 G7

Gm7 *gva* Am7 B \flat M7 B \flat M7 Am7 FM7 C \sharp m7/F \sharp

Bm7 A/C \sharp DM7 E Fdim

F \sharp m7 E/G \sharp A Em7 A7

DM7 A/C \sharp Bm7 A

FM7 AM7 D \flat M7 A7