

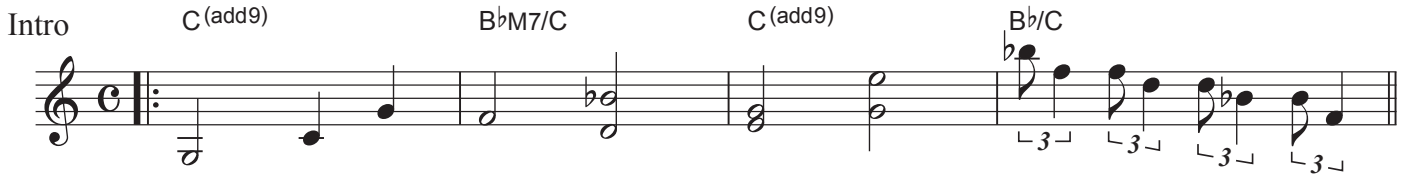
# 紺碧の航路

~ホーム~

アズールレーン

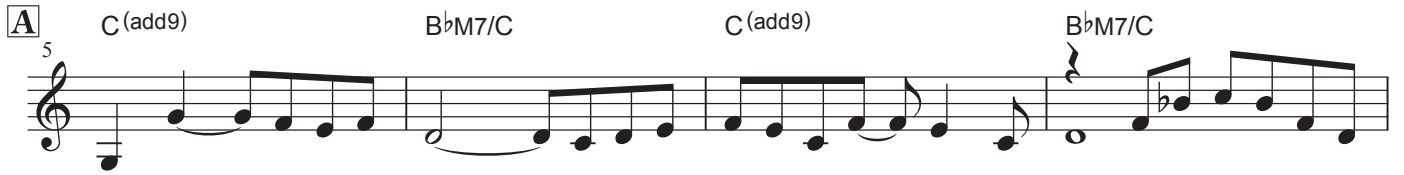
Arr. 紅い流星

Intro C(add9) B $\flat$ M7/C C(add9) B $\flat$ /C



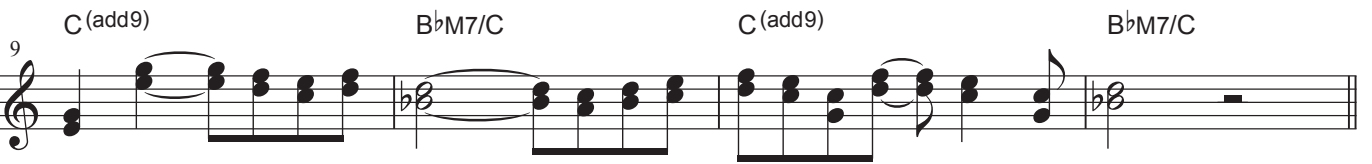
Musical notation for the Intro section, starting with a repeat sign. The melody is in treble clef, 4/4 time. Chords are indicated above the staff: C(add9), B $\flat$ M7/C, C(add9), and B $\flat$ /C. The B $\flat$ /C section features triplet eighth notes.

**A** C(add9) B $\flat$ M7/C C(add9) B $\flat$ M7/C



Musical notation for Section A, starting at measure 5. The melody is in treble clef, 4/4 time. Chords are indicated above the staff: C(add9), B $\flat$ M7/C, C(add9), and B $\flat$ M7/C.

C(add9) B $\flat$ M7/C C(add9) B $\flat$ M7/C



Accompaniment for Section A, starting at measure 9. The bass line is in treble clef, 4/4 time. Chords are indicated above the staff: C(add9), B $\flat$ M7/C, C(add9), and B $\flat$ M7/C. The notation includes chords and some melodic lines.

**B** FM7 Em7 Dm7 G7



Musical notation for Section B, starting at measure 13. The melody is in treble clef, 4/4 time. Chords are indicated above the staff: FM7, Em7, Dm7, and G7. The notation includes eighth notes and rests.

A $\flat$ M7  $^3$ Gm7 Fm7 Gsus4 G



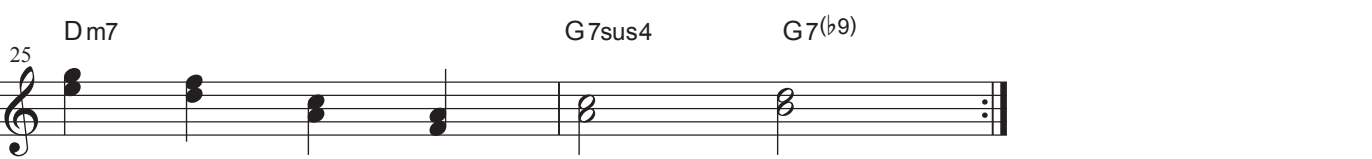
Accompaniment for Section B, starting at measure 17. The bass line is in treble clef, 4/4 time. Chords are indicated above the staff: A $\flat$ M7,  $^3$ Gm7, Fm7, Gsus4, and G. The notation includes chords and triplet eighth notes.

**C** FM7 Em7 E7 Em7/A A7( $\flat$ 13)



Musical notation for Section C, starting at measure 21. The melody is in treble clef, 4/4 time. Chords are indicated above the staff: FM7, Em7, E7, Em7/A, and A7( $\flat$ 13). The notation includes eighth notes and triplet eighth notes.

Dm7 G7sus4 G7( $\flat$ 9)



Accompaniment for Section C, starting at measure 25. The bass line is in treble clef, 4/4 time. Chords are indicated above the staff: Dm7, G7sus4, and G7( $\flat$ 9). The notation includes chords and a repeat sign at the end.

# 旅立ちのとき

~出撃~

アズールレーン  
Arr. 紅い流星

Intro

GM7

Musical notation for the Intro, starting with a 4-measure rest followed by a series of chords and a triplet.

**A** GM7 Am7 Em7 Am7 D7

Musical notation for section A, measures 7-10.

Musical notation for section A, measures 11-14.

Musical notation for section A, measures 15-18.

Musical notation for section A, measures 19-22.

**B** CM7 Bm7 Am7 D7

Musical notation for section B, measures 23-26.

Musical notation for section B, measures 27-30.

Musical notation for section B, measures 31-34.

# 敵影感知

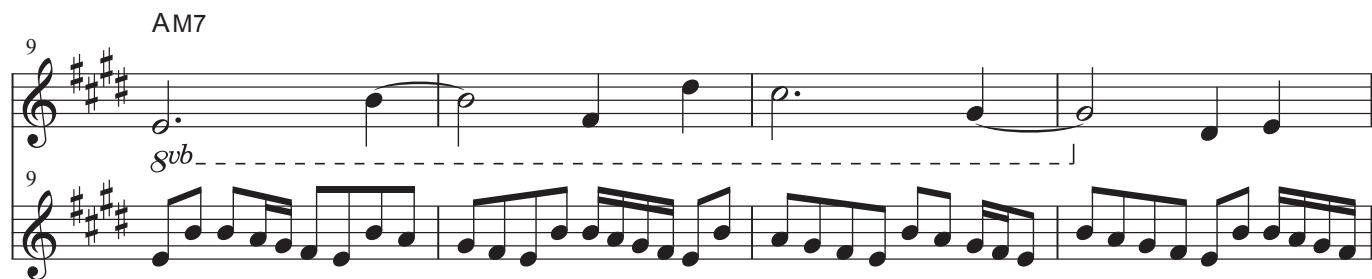
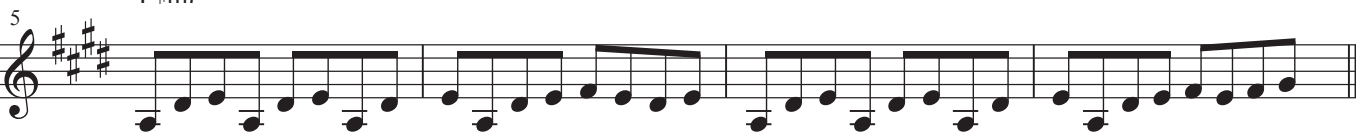
~バトル~

アズールレーン

Arr. 紅い流星

Intro

AM7



# 寮舎でひとやすみ

~寮舎~

アズールレーン

Arr. 紅い流星

Musical score for "寮舎でひとやすみ" (寮舎). The score is in G major, 4/4 time, and consists of 17 measures. It is divided into two sections: A (measures 5-12) and B (measures 13-17). The key signature has one sharp (F#). The score includes a treble clef, a key signature of one sharp, and a common time signature. The melody is written on a single staff, and the accompaniment is written on a second staff below it. The accompaniment consists of a steady eighth-note bass line and chords. The chords are indicated by letters above the staff: GM7, CM7, GM7, CM7, GM7, CM7, GM7, CM7, Am7, D7, Am7, D7, Am7, A7, D7. The score ends with a double bar line and repeat dots.

# 好敵手たち

~ボス戦~

アズールレーン

Arr. 紅い流星

Intro

Dm

A7

D7



Gm7

B♭M7

Em7(b5)

A7



**A**

Dm

A7

D7



Gm7

B♭M7

Em7(b5)

A7



**B**

Gm7

C7

Am7

D7

Gm7

C7

FM7



Gm7

Am7

B♭M7

C7

B♭7

A7



**C**

Gm7

C7

Gm7

C7

FM7

A7



B♭M7

Am7

Gm7

Am7

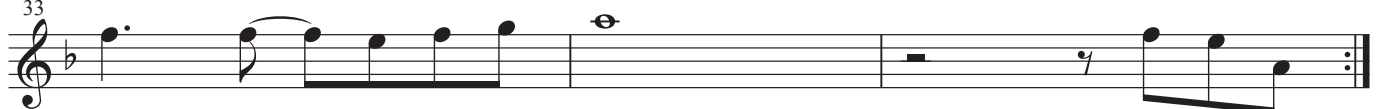
B♭M7

C7



B♭7

A7



# エンドレスワルツ

~赤城・加賀戦~

アズールレーン

Arr. 紅い流星

**A**Bm7

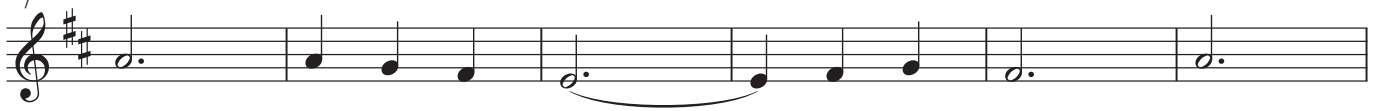
G#m7(b5)



C#7

Em7

F#m7



C#m7(b5)

F#7

**B**Bm7

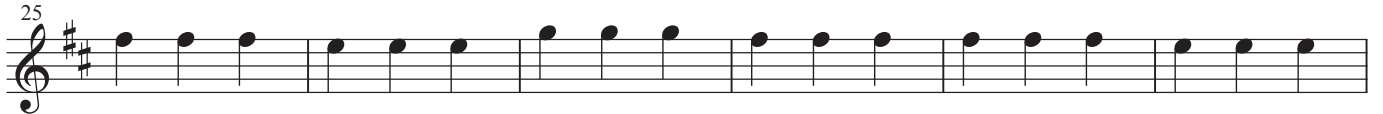


GM7



Em7

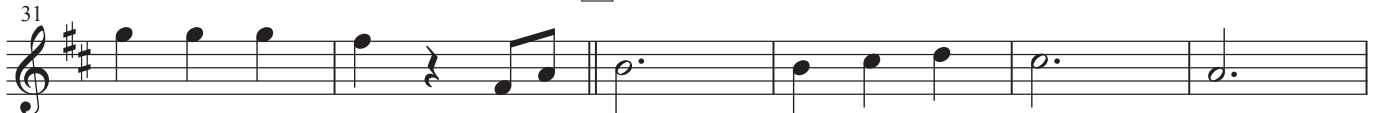
C#m7(b5)



F#7

**C**Bm7

GM7



A7

DM7

A/C#

Bm7



GM7

A7

D

A/C#



**D**GM7

A7

Bm7



F#m7

GM7

A7



# エンドレスワルツ

61 C#m7(b5) F#7 E GM7 A

67 Bm7 F#m7 GM7 A Bm7 A

73 Em7 F#m7 GM7

79 F#7

# ロマンの始まり

~タイトル~

アズールレーン

Arr. 紅い流星

**A** CM7 GM7/A A7(#9) Dm7

4 Dm7/G G7 CM7 Gm7 C7 FM7

8 Bb7 Dm7 Dm7/G G7

**B** FM7 Em7(b5) A7 Dm7 D7 Dm7/G G7 G/F

11

15 Em7 E7 Am7 Bm7 Dm/E E7 Dm7(b5) Bb7

19 Dm7/G G7